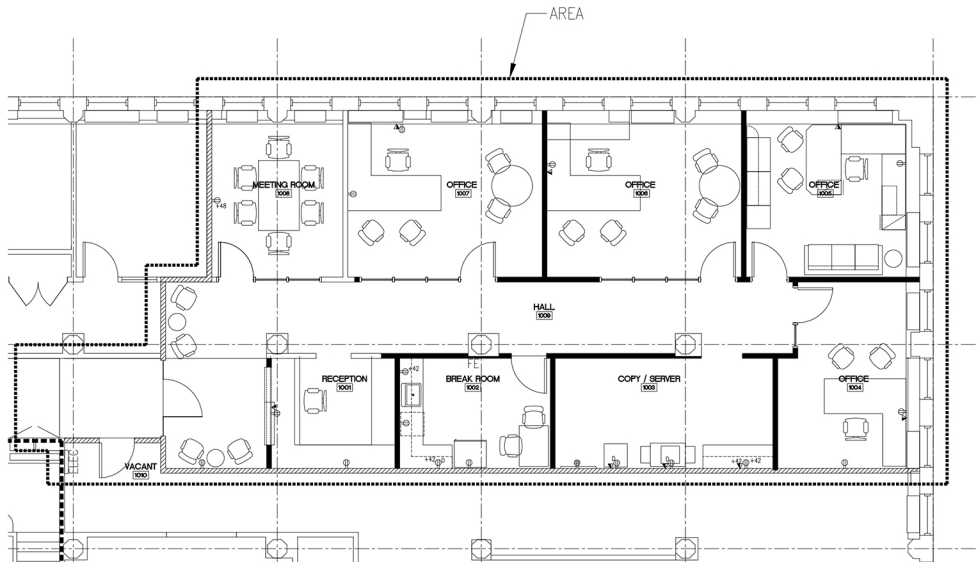




**520 SW Yamhill ST,
Suite 1000
Portland, OR 97204**

PACIFIC BUILDING



2,217SF

Unit Number - 1000
Floor - 10
Date Available - April 2019
Space Use - Office
Sq. Ft. - 2,217
Rate - Negotiable

Space Features:

Four private offices, conference room, kitchenette, copy/server room large reception area. The suite features great views of the city and Mt. Hood



**503-227-6142
contact@thepacificbuilding.com**